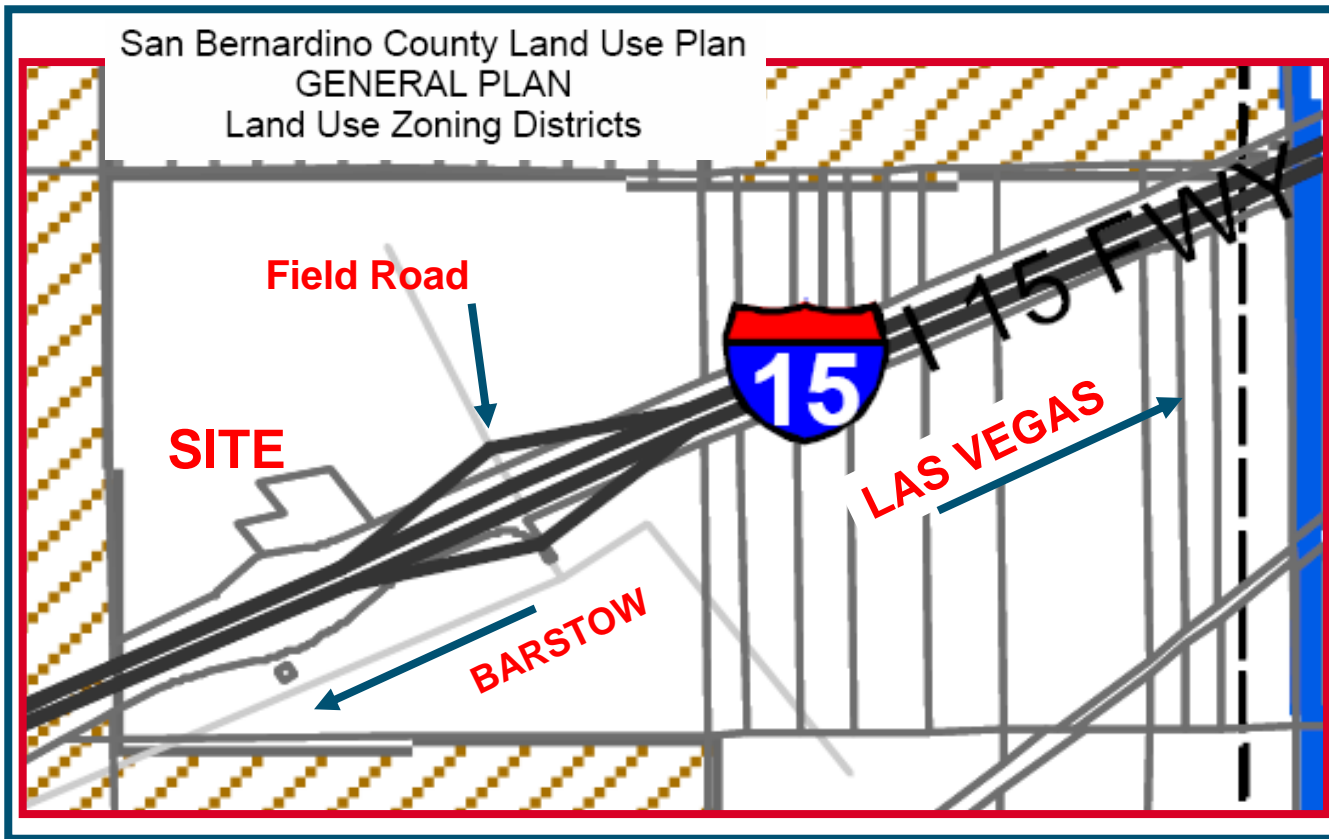


# FREEWAY FRONTAGE

± 15.72 Acres

# Interstate 15 @ Field Road

San Bernardino County, California



“INVESTMENT OPPORTUNITY”

## HIGHLIGHTS

- ± 767.3 Feet of Freeway Visibility on I-15
- Immediate Freeway Access
- Zoned RC (Resource Conservation)
- APN: 0541-221-05
- San Bernardino Thomas Guide Page 3415, J6
- Offering Price: \$395,000



For information, please contact your exclusive listing agent

**NAI Capital**

Commercial Real Estate Services, Worldwide.

No warranty, express or implied, is made as to the accuracy of the information contained herein. This information is submitted subject to errors, omissions, change of price, rental or other conditions, withdrawal without notice, and is subject to any special listing conditions imposed by our principals. Cooperating brokers, buyers, tenants and other parties who receive this document should not rely on it, but should use it as a starting point of analysis, and should independently confirm the accuracy of the information contained herein through a due diligence review of the books, records, files and documents that constitute reliable sources of the information described herein.

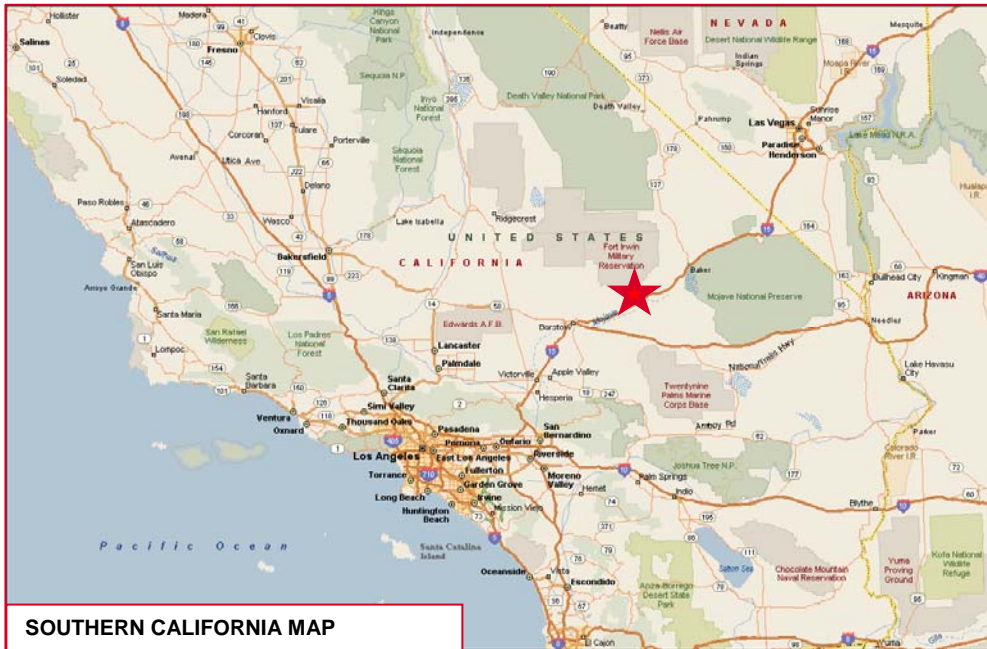
**Scott Lisk**  
Senior Vice President  
951-346-0805  
slisk@naicapital.com

2280 Market Street, Suite 150  
Riverside, California 92501  
tel 951 346 0800  
fax 951 346 0801

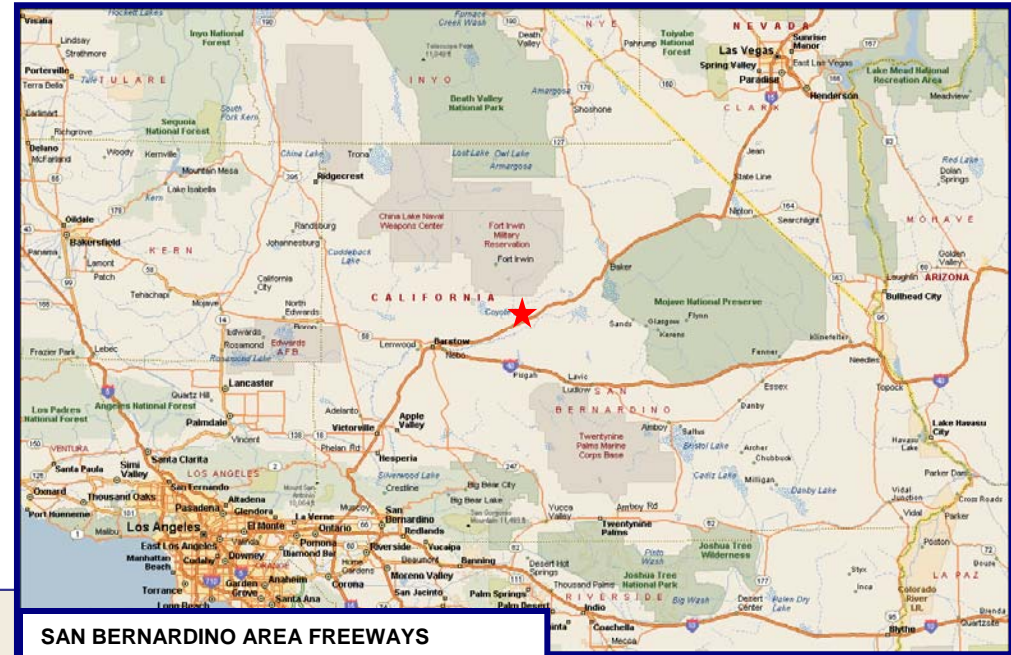
±15.72 Acres

Immediate I – 15 Freeway Access

San Bernardino County, California



SOUTHERN CALIFORNIA MAP



SAN BERNARDINO AREA FREEWAYS



Commercial Real Estate Services, Worldwide.

No warranty, express or implied, is made as to the accuracy of the information contained herein. This information is submitted subject to errors, omissions, change of price, rental or other conditions, withdrawal without notice, and is subject to any special listing conditions imposed by our principals. Cooperating brokers, buyers, tenants and other parties who receive this document should not rely on it, but should use it as a starting point of analysis, and should independently confirm the accuracy of the information contained herein through a due diligence review of the books, records, files and documents that constitute reliable sources of the information described herein.

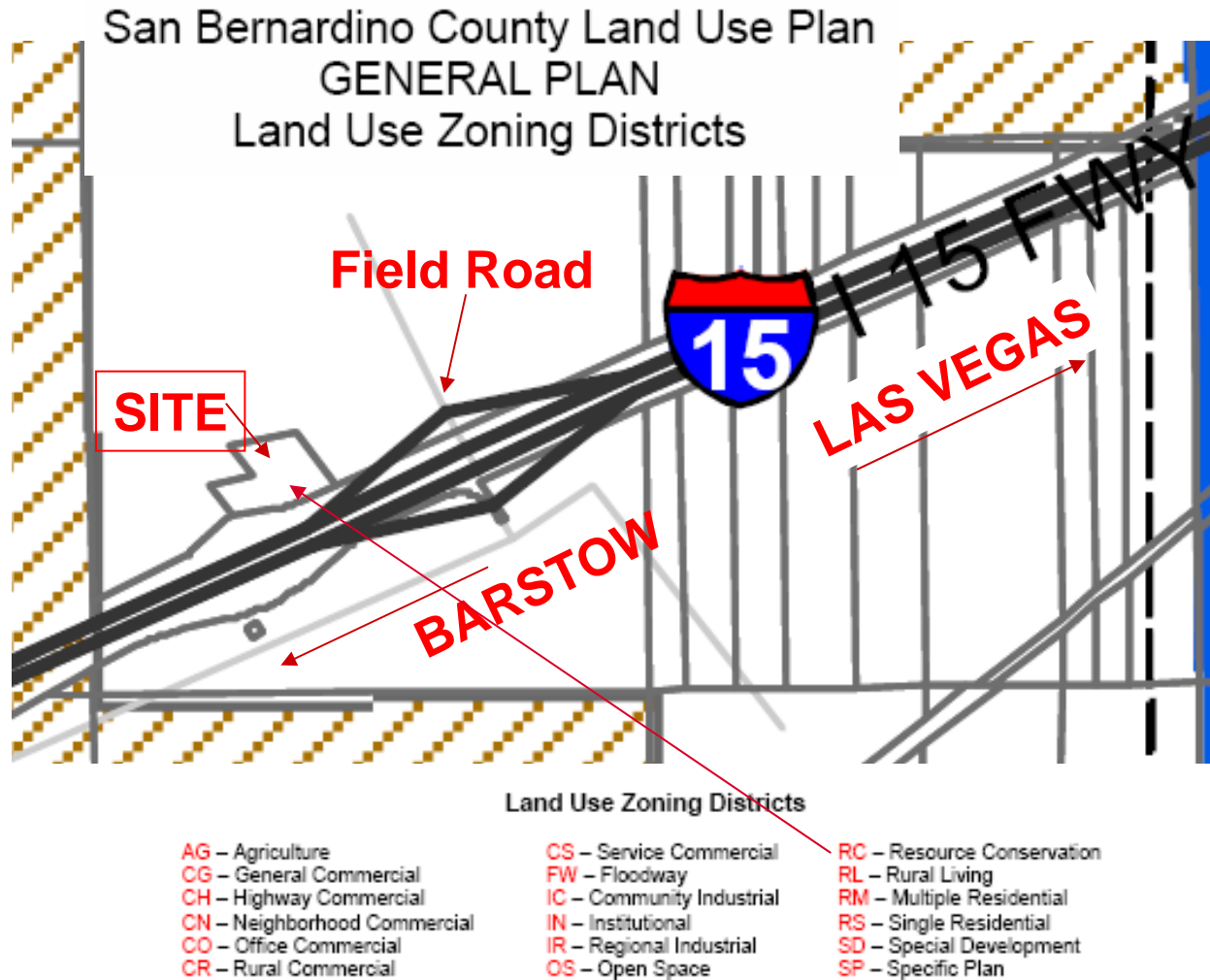
Scott Lisk  
Senior Vice President  
951-346-0805  
slisk@naicapital.com

2280 Market Street, Suite 150  
Riverside, California 92501  
tel 951 346 0800  
fax 951 346 0801

± 15.72 Acres

# Investment Opportunity

San Bernardino County, California



**NAI Capital**

Commercial Real Estate Services, Worldwide.

No warranty, express or implied, is made as to the accuracy of the information contained herein. This information is submitted subject to errors, omissions, change of price, rental or other conditions, withdrawal without notice, and is subject to any special listing conditions imposed by our principals. Cooperating brokers, buyers, tenants and other parties who receive this document should not rely on it, but should use it as a starting point of analysis, and should independently confirm the accuracy of the information contained herein through a due diligence review of the books, records, files and documents that constitute reliable sources of the information described herein.

For information, please contact your exclusive listing agent

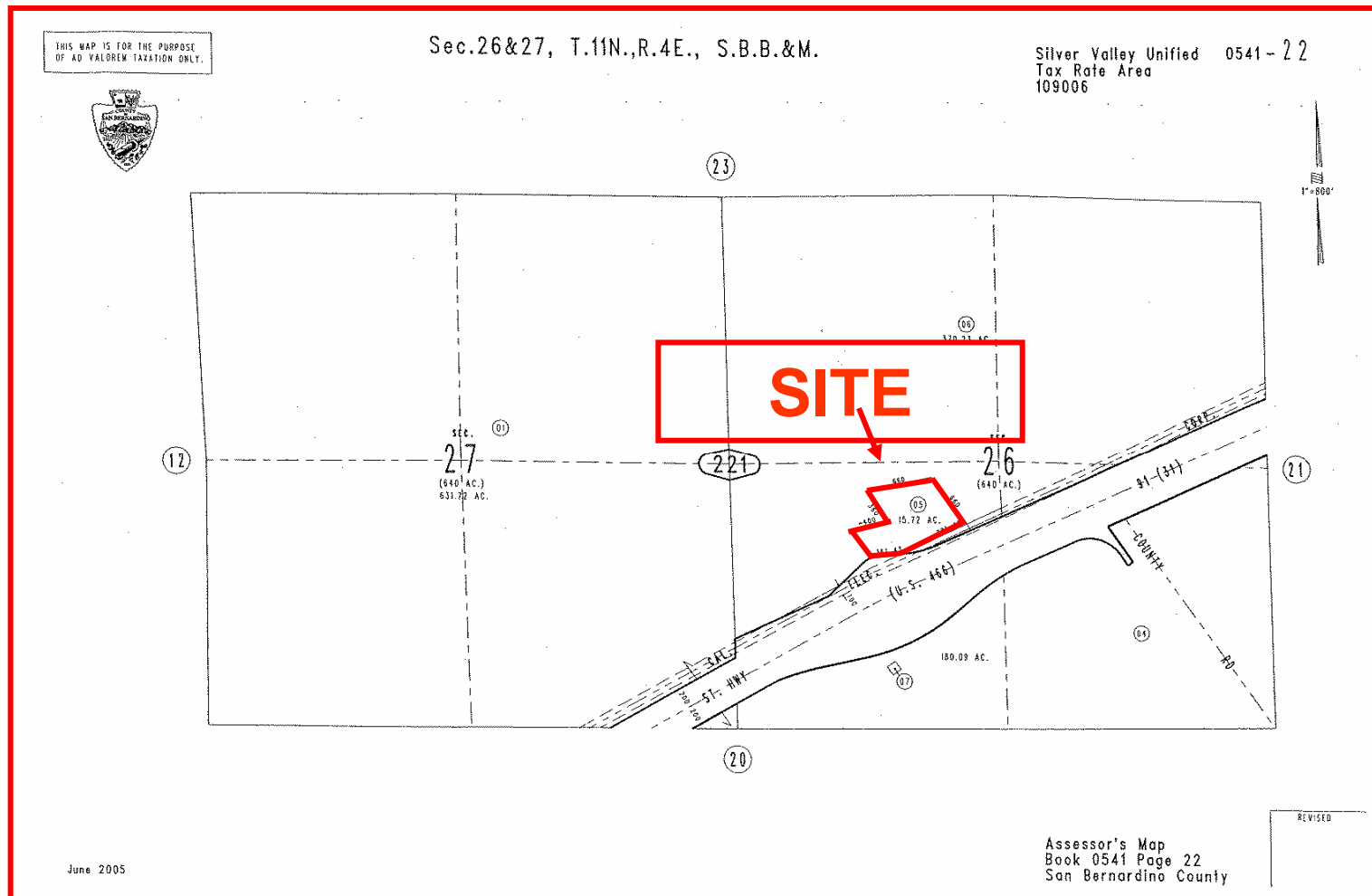
Scott Lisk  
Senior Vice President  
951-346-0805  
slisk@naicapital.com

2280 Market Street, Suite 150  
Riverside, California 92501  
tel 951 346 0800  
fax 951 346 0801

# ±15.72 Acres - Investment Opportunity w/ Freeway Frontage

San Bernardino County, California

## Assessor's Parcel Map



For information, please contact your exclusive listing agent

**NAI Capital**

Commercial Real Estate Services, Worldwide.

No warranty, express or implied, is made as to the accuracy of the information contained herein. This information is submitted subject to errors, omissions, change of price, rental or other conditions, withdrawal without notice, and is subject to any special listing conditions imposed by our principals. Cooperating brokers, buyers, tenants and other parties who receive this document should not rely on it, but should use it as a starting point of analysis, and should independently confirm the accuracy of the information contained herein through a due diligence review of the books, records, files and documents that constitute reliable sources of the information described herein.

**Scott Lisk**  
Senior Vice President  
951-346-0805  
slisk@naicapital.com

2280 Market Street, Suite 150  
Riverside, California 92501  
tel 951 346 0800  
fax 951 346 0801