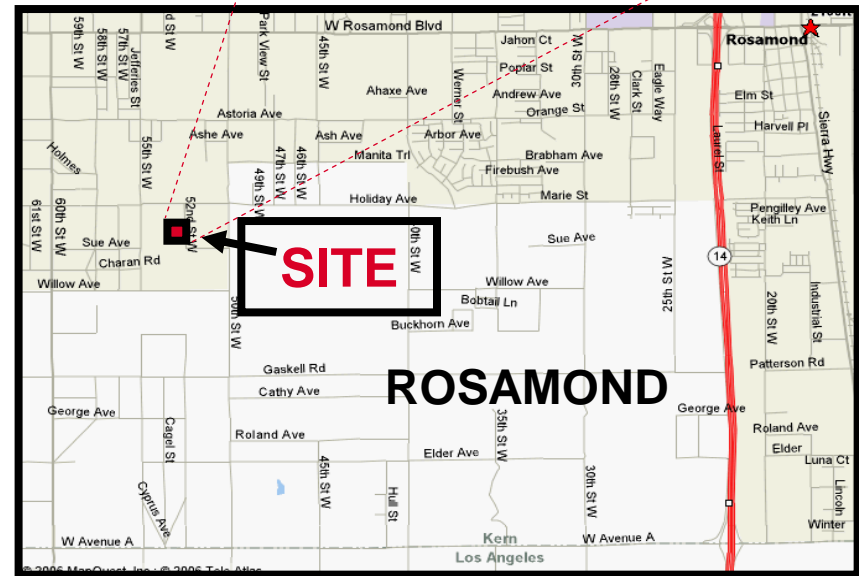
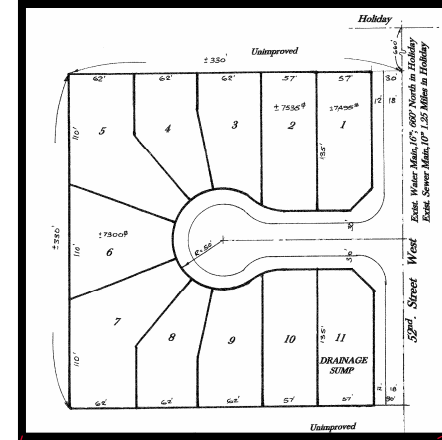
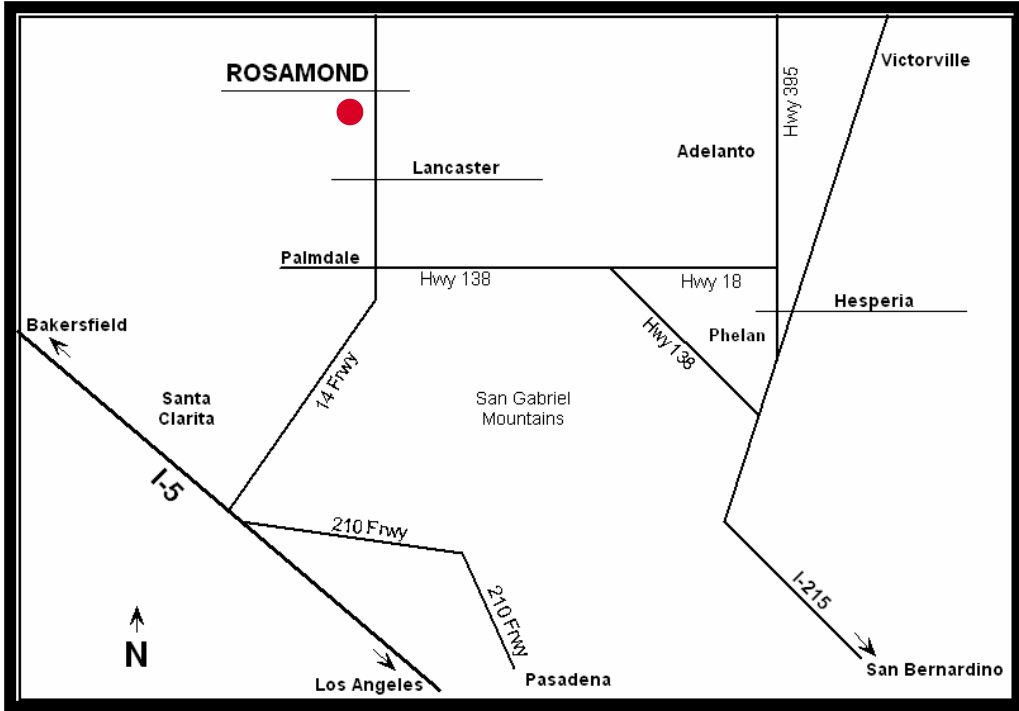


# AVAILABLE 11 Lot Single-Family Home Project Rosamond, California



- Tentative Tract Map #7087
- ± 2.5 Acres
- Utilities Available
- AP#: 375-062-10
- Kern Thomas Guide: Pg. 2763 A6
- Offering Price: \$ 300,000 w/ TTM Approval

West side of 52nd St W, Apx. 330' S of Holiday Ave., West of Hwy 14 "Antelope Valley Freeway" & Edwards AF Base

For information, please contact your exclusive listing agent



Commercial Real Estate Services, Worldwide.

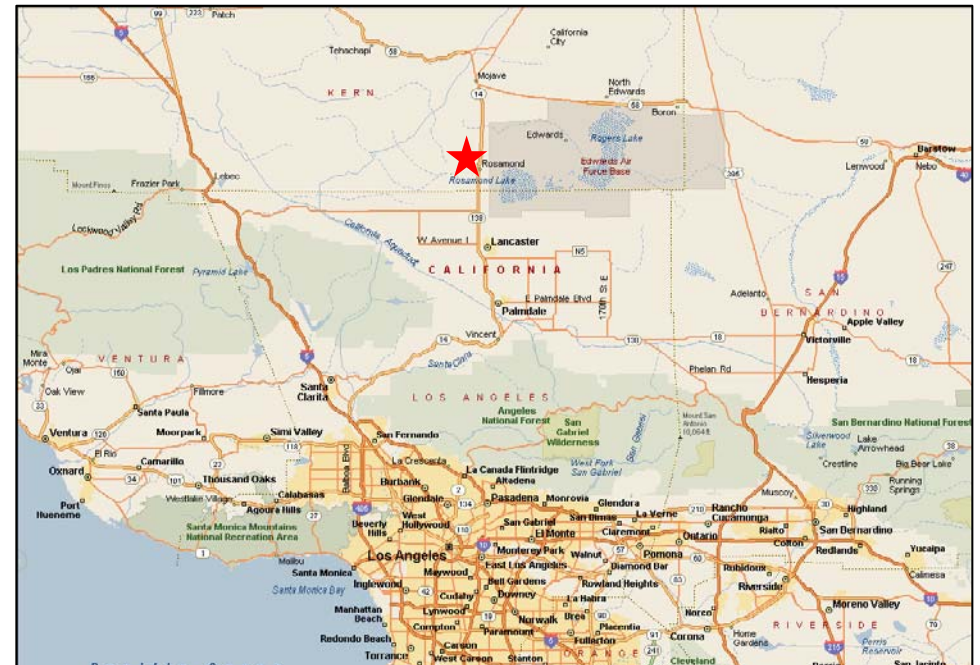
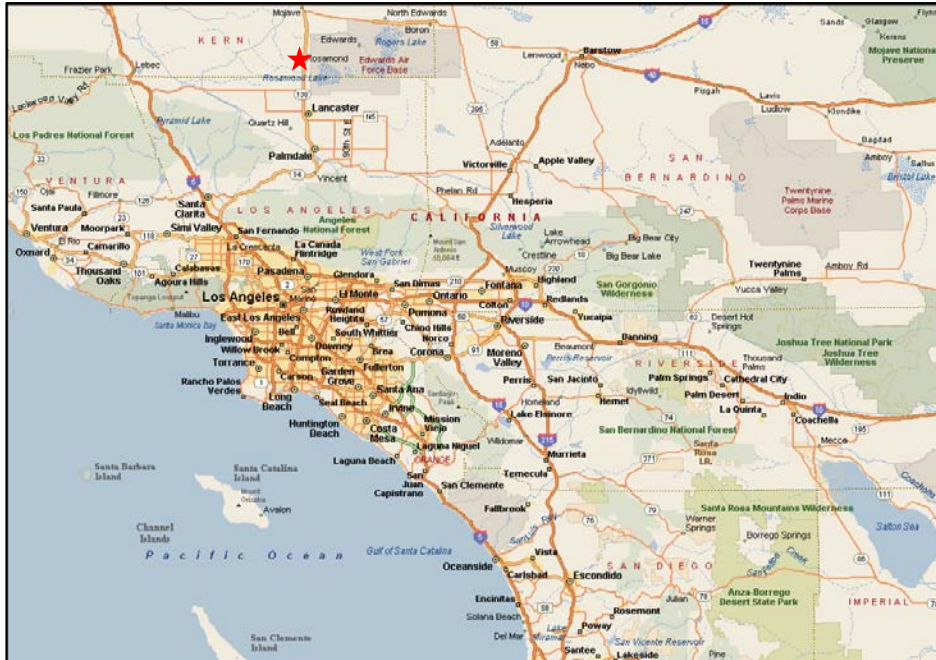
No warranty, express or implied, is made as to the accuracy of the information contained herein. This information is submitted subject to errors, omissions, change of price, rental or other conditions, withdrawal without notice, and is subject to any special listing conditions imposed by our principals. Cooperating brokers, buyers, tenants and other parties who receive this document should not rely on it, but should use it as a starting point of analysis, and should independently confirm the accuracy of the information contained herein through a due diligence review of the books, records, files and documents that constitute reliable sources of the information described herein.

**Scott Lisk**  
Senior Vice President  
951-346-0805  
slisk@naicapital.com

2280 Market Street, Suite 150  
Riverside, California 92501  
tel 951 346 0800  
fax 951 346 0801

# Rosamond, California

## Southern California Freeway Maps



**NAI Capital**  
Commercial Real Estate Services, Worldwide.

No warranty, express or implied, is made as to the accuracy of the information contained herein. This information is submitted subject to errors, omissions, change of price, rental or other conditions, withdrawal without notice, and is subject to any special listing conditions imposed by our principals. Cooperating brokers, buyers, tenants and other parties who receive this document should not rely on it, but should use it as a starting point of analysis, and should independently confirm the accuracy of the information contained herein through a due diligence review of the books, records, files and documents that constitute reliable sources of the information described herein.

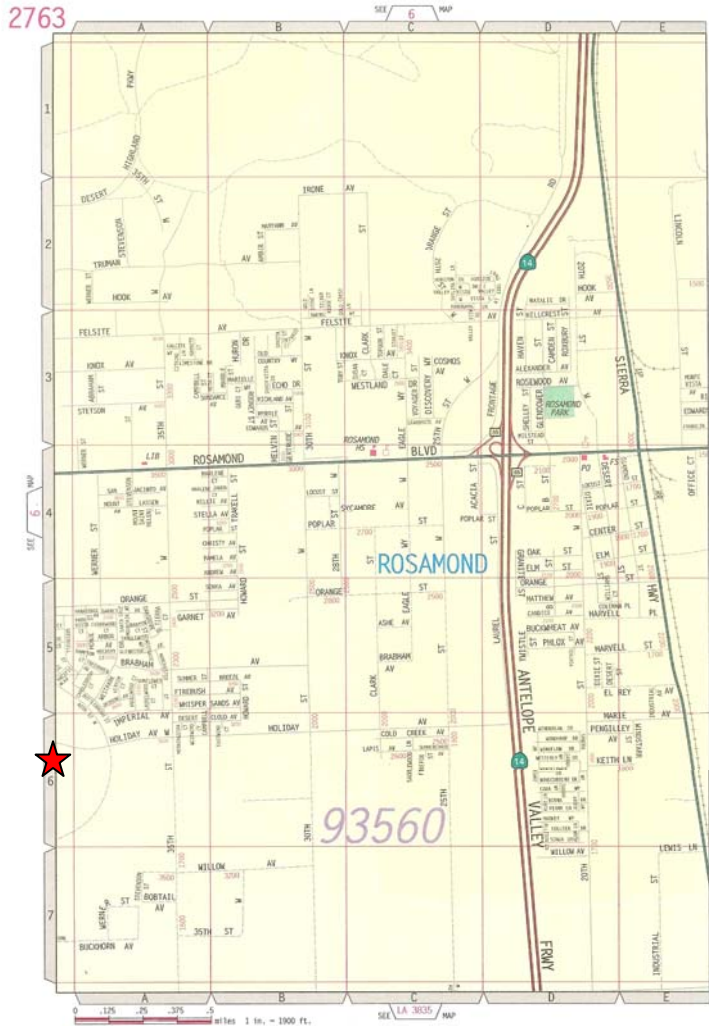
For information, please contact your exclusive listing agent

**Scott Lisk**  
Senior Vice President  
951-346-0805  
slisk@naicapital.com

2280 Market Street, Suite 150  
Riverside, California 92501  
tel 951 346 0800  
fax 951 346 0801

# Rosamond, California

## Site Information



**375-062-10**  
**± 2.5 Acres**  
**Rosamond, CA**

- Address: West side of 52<sup>nd</sup> St W, Apx. 330' S of Holiday Ave,
- Size: ± 2.5 Acres
- Legal: A portion of the N ½ of SEC. 26, T. 9N, R. 13W
- Utilities: Gas, power, telephone, water and sewer available
- Zoning: A-1
- General Plan: 5.3 / 4.4 – 10 Units/Acre with Zone Change Site:  
Flat, in the immediate path of growth heading directly south of Rosamond Blvd
- Intended Use: 11 SF Residences – 3 Bedroom, 2 Bath, 2-car garage
- Offering Price: **\$ 300,000.00 w/ TTM Approval**
- Assessment: District 1991-3



Commercial Real Estate Services, Worldwide.

No warranty, express or implied, is made as to the accuracy of the information contained herein. This information is submitted subject to errors, omissions, change of price, rental or other conditions, withdrawal without notice, and is subject to any special listing conditions imposed by our principals. Cooperating brokers, buyers, tenants and other parties who receive this document should not rely on it, but should use it as a starting point of analysis, and should independently confirm the accuracy of the information contained herein through a due diligence review of the books, records, files and documents that constitute reliable sources of the information described herein.

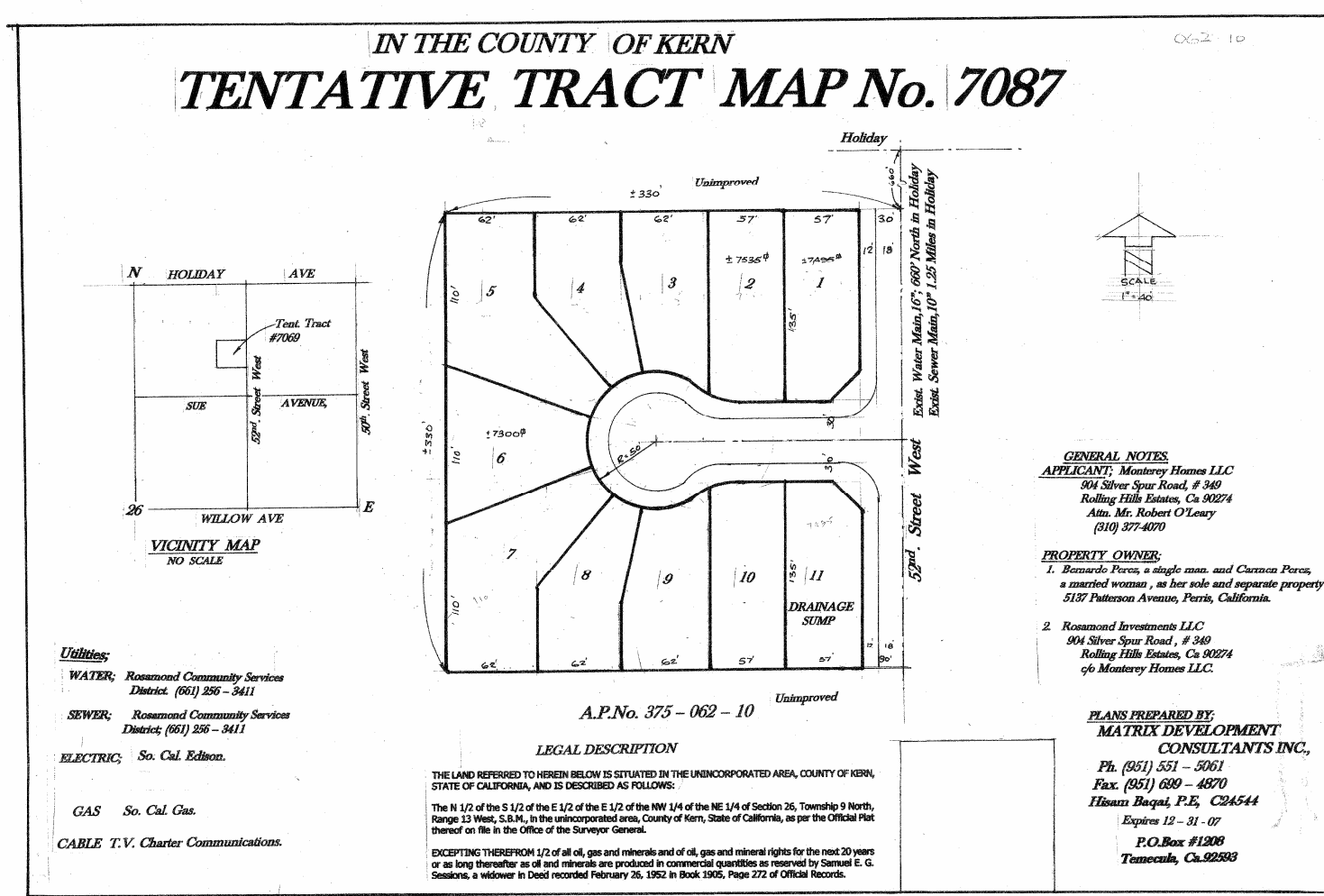
For information, please contact your exclusive listing agent

**Scott Lisk**  
Senior Vice President  
951-346-0805  
slisk@naicapital.com

2280 Market Street, Suite 150  
Riverside, California 92501  
tel 951 346 0800  
fax 951 346 0801

# Rosamond, California

Tentative Tract Map No. 7087



For information, please contact your exclusive listing agent

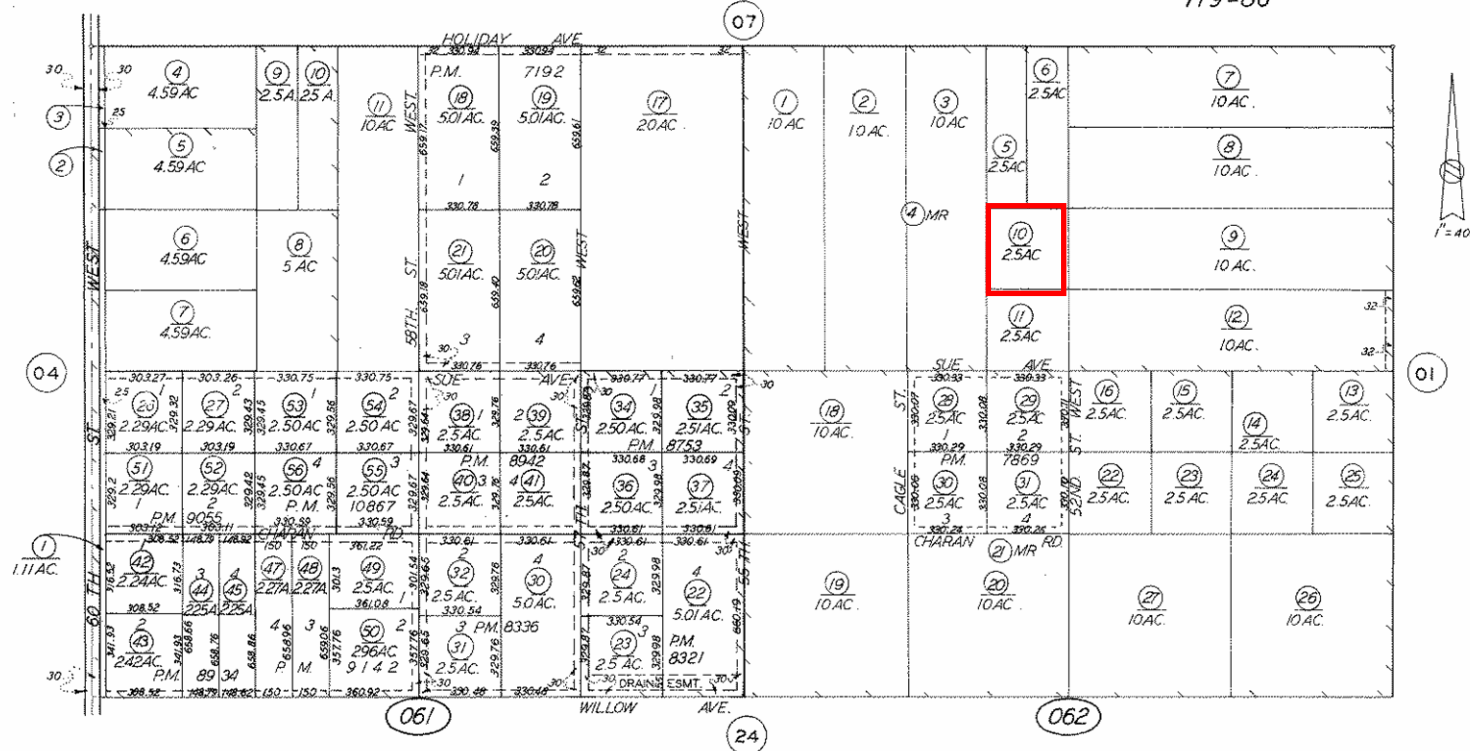
**Scott Lisk**  
Senior Vice President  
951-346-0805  
slisk@naicapital.com

2280 Market Street, Suite 150  
Riverside, California 92501  
tel 951 346 0800  
fax 951 346 0801

# Rosamond, California

## Assessors Map

375-06 NI/2 OF SEC. 26 T.9N.R.13W. SCHOOL DIST. 119-4 375-06  
119-86



Revised: Dec. 9, 2003

Note: This map is for assessment purposes only. It is not to be construed as portraying legal ownership or divisions of land for purposes of zoning or subdivision law.

ASSESSORS MAP NO. 375-06  
COUNTY OF KERN

For information, please contact your exclusive listing agent

Scott Lisk  
Senior Vice President  
951-346-0805  
slisk@naicapital.com

2280 Market Street, Suite 150  
Riverside, California 92501  
tel 951 346 0800  
fax 951 346 0801

**NAI Capital**  
Commercial Real Estate Services, Worldwide.

No warranty, express or implied, is made as to the accuracy of the information contained herein. This information is submitted subject to errors, omissions, change of price, rental or other conditions, withdrawal without notice, and is subject to any special listing conditions imposed by our principals. Cooperating brokers, buyers, tenants and other parties who receive this document should not rely on it, but should use it as a starting point of analysis, and should independently confirm the accuracy of the information contained herein through a due diligence review of the books, records, files and documents that constitute reliable sources of the information described herein.

