

FOR LEASE

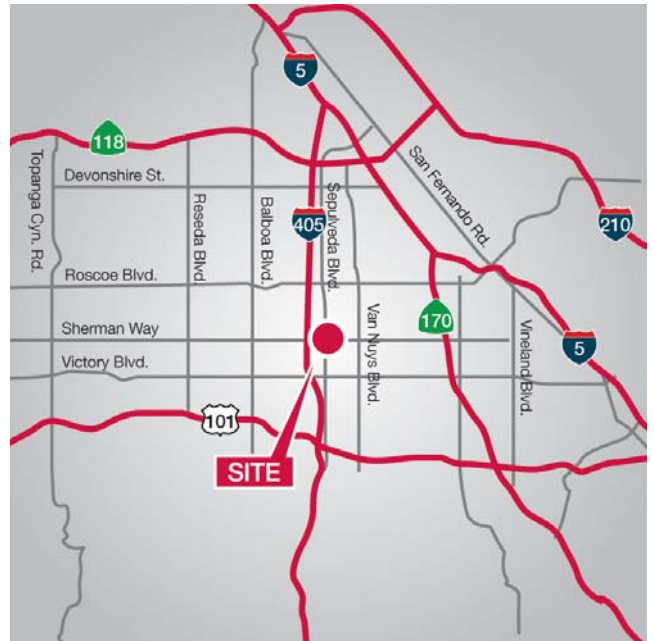
7226 Sepulveda Blvd.

Van Nuys, California



Features

- Entire 9,600 SF Freestanding Building For Lease
- Divisible by Floor (first floor: approx. 4,400 SF, second floor approx. 5,200 SF)
- Central Location and Excellent Building-Identity Potential
- 23 Free Surface Parking Spaces Available Plus Excellent Street Parking
- **\$1.95/Modified Gross Per SF**



NAI Capital

Commercial Real Estate Services, Worldwide.

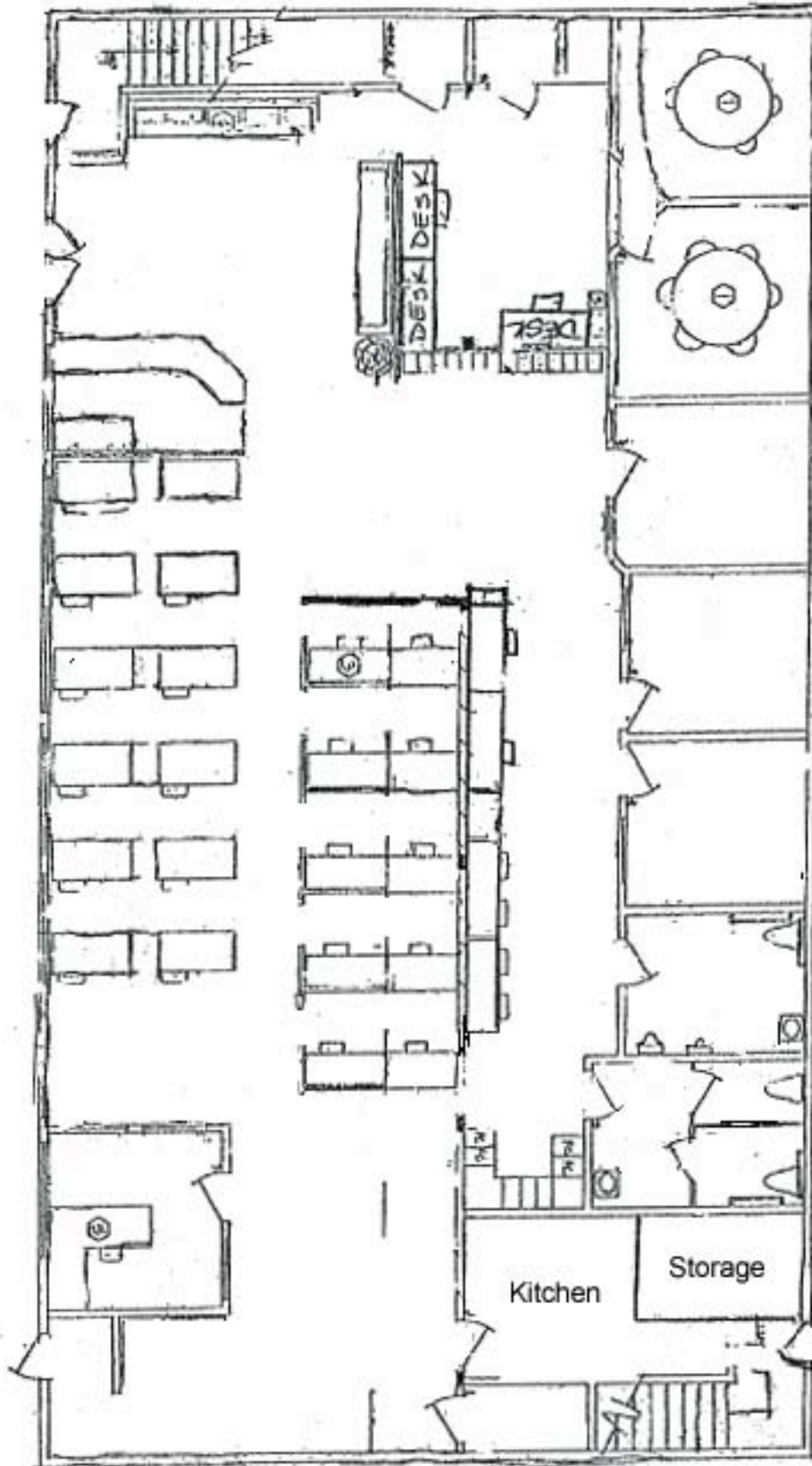
No warranty, express or implied, is made as to the accuracy of the information contained herein. This information is submitted subject to errors, omissions, change of price, rental or other conditions, withdrawal without notice, and is subject to any special listing conditions imposed by our principals. Cooperating brokers, buyers, tenants and other parties who receive this document should not rely on it, but should use it as a starting point of analysis, and should independently confirm the accuracy of the information contained herein through a due diligence review of the books, records, files and documents that constitute reliable sources of the information described herein.

For information, please contact your exclusive listing agent:

Cathy Scullin
Senior Vice President
 818.905.2400
 DRE License #00604569
 cscullin@naicapital.com

16001 Ventura Blvd., Ste. 200
 Encino, CA 91436
 tel 818 905 2400
 fax 818 905 2425
 www.naicapital.com

7226 Sepulveda, Van Nuys - First Floor Plan



7226 Sepulveda - Second Floor Plan

