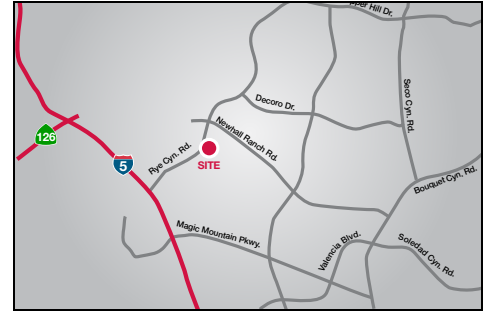


FOR LEASE

Rye Canyon Office Plaza

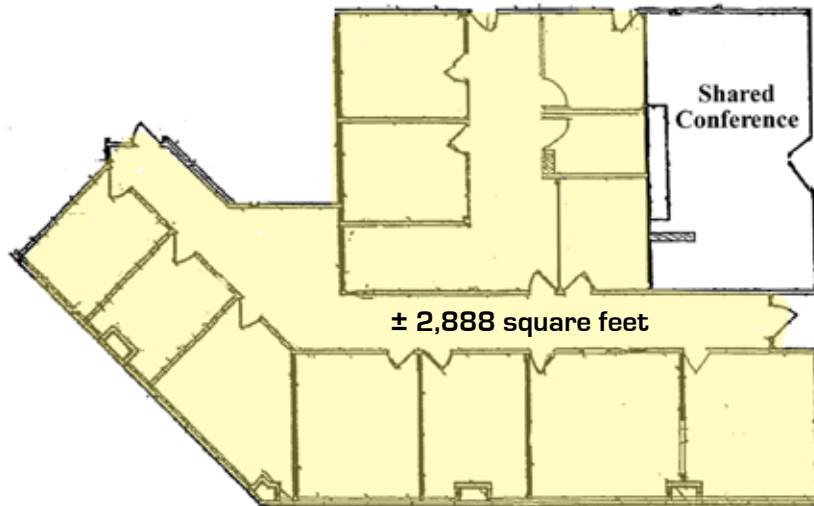
25322 Rye Canyon Road, Valencia, CA 91355



AVAILABLE SPACE:
Approximately 2,888 square feet

\$2.30 Full Service
FREE PARKING

- ◆ Located within a Master Planned Business Park
- ◆ Above Standard Office Improvements
- ◆ Lush Landscape with Outdoor Break Area
- ◆ Excellent Layout - Great Window Line
- ◆ Shared Conference Room
- ◆ Between Newhall Ranch Road and The Old Road
- ◆ Minutes from I-5 and 126 Freeway On-Ramps
- ◆ Minutes from Retail, Restaurants and Other Amenities
- ◆ FREE Outstanding 5 per 1000 Square Feet Parking
- ◆ Excellent Rental Value



Commercial Real Estate Services, Worldwide.
www.NAICapital.com

Cathy Scullin

Senior Vice President
CScullin@NAICapital.com
DRE#: 00604569

Yair Haimoff

Vice President
YHaimoff@NAICapital.com
DRE#: 01414758

Timothy Foutz

Sr. Executive Vice President
TFoutz@NAICapital.com
DRE#: 00389515

16001 Ventura Boulevard, #200 • Encino, California 91436 • (818) 905-2400 • Fax: (818) 905-2425

No warranty, express or implied, is made as to the accuracy of the information contained herein. This information is submitted subject to errors, omissions, change of price, rental or other conditions, withdrawal without notice, and is subject to any special listing conditions imposed by our principals. Cooperating brokers, buyers, tenants and other parties who receive this document should not rely on it, but should use it as a starting point of analysis, and should independently confirm the accuracy of the information contained herein through a due diligence review of the books, records, files and documents that constitute reliable sources of the information described herein.